

Good evening, Mr. Hunt. I hope you're feeling well-rested because tonight's assignment is quite arduous. Your mission, should you choose to accept it, is to collect six pieces of a puzzle that will lead to the identity of an incredibly dangerous double-agent.

Because of the severity of this threat, we have several IMF teams working on the case tonight. In addition to solving the case, you also need to complete as many training missions as possible. Success in these tasks will distinguish your team as the best and brightest. (See list on the reverse side of this sheet.)

As every spy knows, good spy work takes time. There are no bonus points for finishing early. However, there is a deadline. You must return to home base in two hours.

As always, should any member of your team be caught or killed, the Secretary will disavow all knowledge of your actions.

Good luck.

Mission Impossible Logue		
Team Name		
6 Puzzle Pieces	30 points per piece	
1	2	3
4	5	6
Bonus 20 points for completing all 6		
Training Missions	0-250 possible bonus points	
Total		

Training Missions

Mission Description	Points	Completed? Points Earned
Video of a 30-second chase scene on foot	20	
Video of a stranger humming or singing the Mission Impossible theme song	10	
Go to the home of a person on another team and steal a framed photo of them from their house. Bring photo back to headquarters after mission.	30	
Photo of your team in an elevator	10	
Secretly take a photo of another team. (They cannot know you took the photo.)	20	
Video of your team all doing a handstand at the same time. (One person can be the photographer.)	10	
Photos of Motorcycles (2 points for each one)	2 per	
Photo/video of a member of your team with any kind of fire or explosion.	10	
Leave ransom in brown paper bag (re: Fluffy) on doorstep of a friend, ring the doorbell, and run.	20	
Film your team frantically running through the parking lot on SW corner of 4800 South and State.	10	
Video your team in a 30-second fake fist fight or mixed martial arts battle. No injuries.	20	
Photo of team in front of police department or patrol car	10	
Kidnap the mom, dad, or grandparent of someone on another team. Drive them around the block and return them to their home. Take a photo/video.	30	
Detonate a Mentos bomb in a safe place. Video it.	20	
Photo of team in front of graffiti art on east and north side of Ice Haus at 7 E. 4800 S.	20	
Total Points for Training Missions	=	

Here is the ransom you
demanded.

Please return our cat,
Fluffy, as we miss her
dearly.

The Giver

Lois Lowry

B&N

Arnold Cipher

33.8.7.1

33.2.2.2

33.4.2.2

33.4.8.4

33.1.1.5

33.1.10

Quiz

In the book "Matilda", Matilda's father is a salesman. What does he sell?

Which of Percy Jackson's friends owns a baseball cap that can make the wearer invisible?

What does the F stand for in BFG?

Who is the professor of Divination at Hogwarts School of Witchcraft and Wizardry?
Professor

A rugged mountain man and ice harvester in the movie "Frozen".

In "The Lion, the Witch, and the Wardrobe", who makes Narnia cold and wintery year-round?
The

What is Bricksburg's favorite TV show in the "Lego Movie"?
Where are my ?

The reluctant damsel in distress, who always seems to be Megamind's hostage.

This young lady works in a bike shop and would like to be Pee-Wee Herman's girlfriend.

Who is Greg's awful older brother in "Diary of a Wimpy Kid"?

Chewbacca's co-pilot and captain of the Millennium Falcon.

Circle of Clues/Puzzle Pieces

1. Photo of Bedstone
 - a. At cemetery, find movie quiz and **puzzle piece**.

2. Quiz leads to Native American sculpture in park
 - a. At Chief, find Arnold cipher and **puzzle piece**.

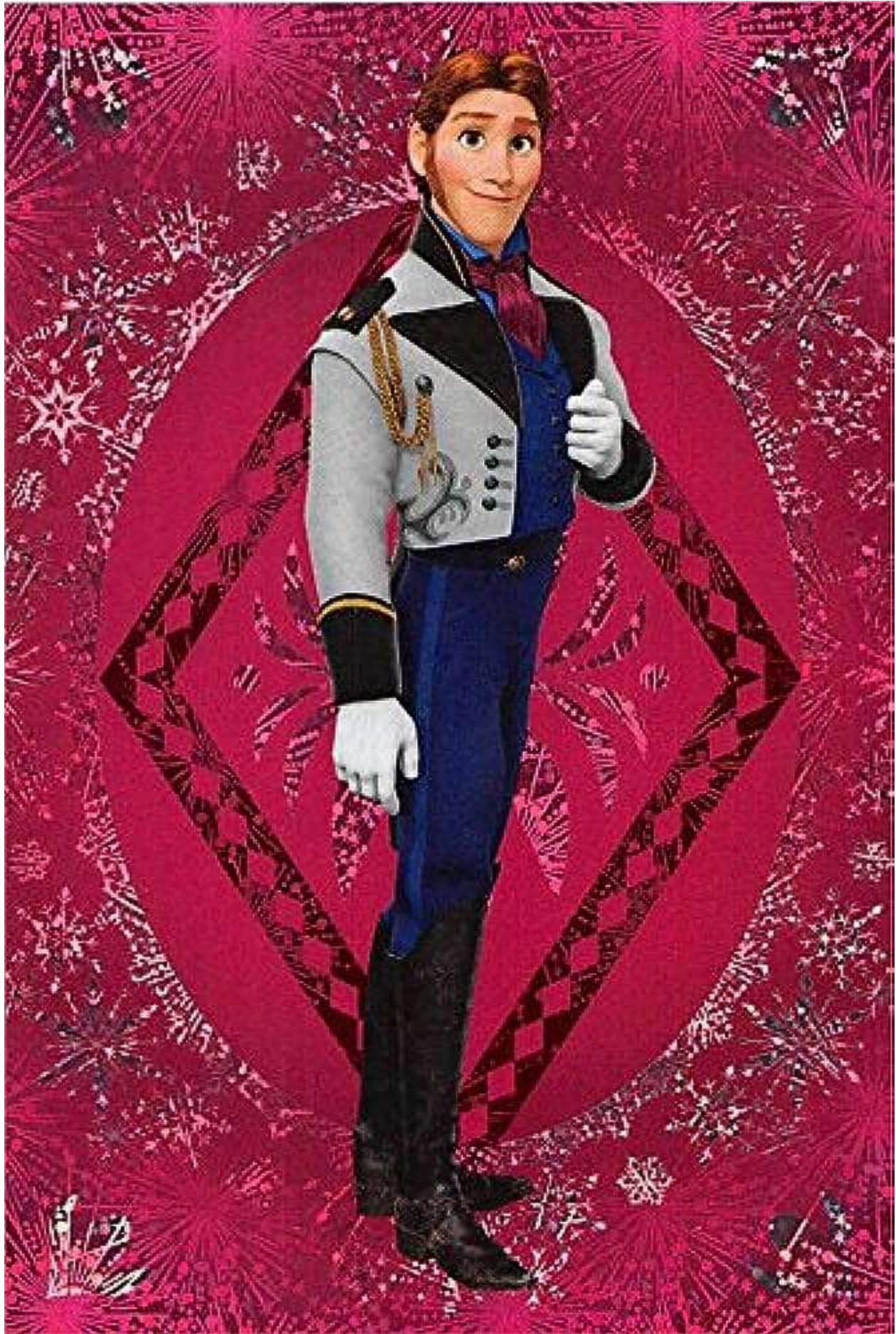
3. Cipher takes you to bookstore and **puzzle piece**.

4. The book cipher leads to Jerk's Bike Shop
 - a. At Jerk's, there will be a phone number in chalk.

Phone call tells them to meet at a specific address, where they receive envelope w/ clue and **puzzle piece**.

5. Envelope leads you to Leif's backyard
 - a. Shooting range and **puzzle piece**. You get to see what is inside every target you hit. Letters for SHOVEL
 - b. Go to shovels and find a map to park.

6. Dig a hole and find buried box with photo of Bedstone and **puzzle piece**.





Congratulations. You have found
your final piece.

Continue working on your training missions until
the deadline.

Congratulations. You have found
your final piece.

Continue working on your training missions until
the deadline.

Congratulations. You have found
your final piece.

Continue working on your training missions until
the deadline.

Congratulations. You have found
your final piece.

Continue working on your training missions until
the deadline.